

## IE Managed Miniature Media Converter Quick Start Guide

**The compact media converter with full  
SNMP management and PoE.**



### About this Quick Start Guide

This Quick Start Guide was designed to be used as a supplement to the product installation manual to ease setup and installation of the IE Managed Miniature Media Converter. Please refer to the user manual included on the product documentation CD for more detailed instructions.

#### 1. Advanced Features

- Bandwidth Control
- Q-in-Q Support
- VLANs
- Link Fault Pass-Through (LFPT)

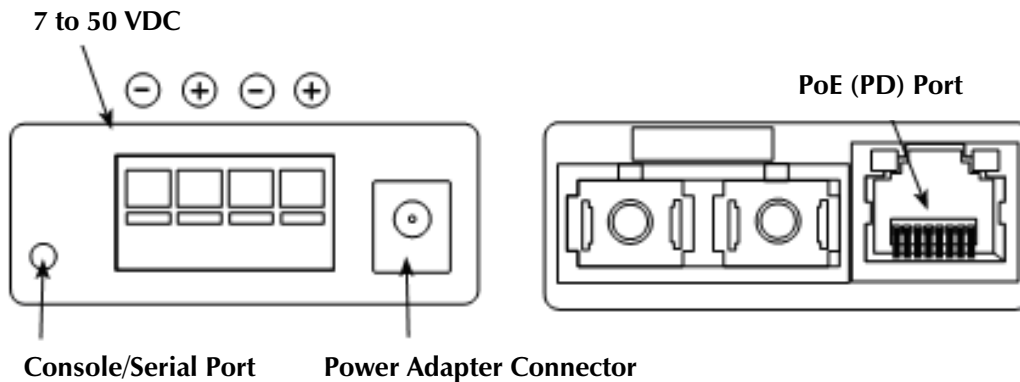
The IE Managed Miniature Media Converter is a CPE device and is not recommended to be installed in pairs. It can be installed as a Remote device that is configured as a Host.

#### 2. Power Options

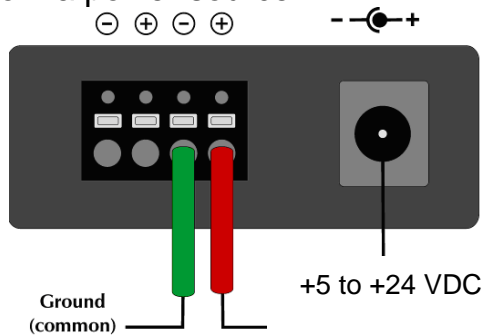
The IE Managed Miniature Media Converter includes multiple powering options. Users can choose any of the following three options, or more than one for power redundancy:

## IE Managed Miniature Media Converter

1. A country-specific, high-reliability power adapter (included). 100 to 240 VAC input, 5 VDC output.
2. IEEE 802.3af Power over Ethernet (Powered Device) standard; draws power from PoE (Power Sourcing Equipment).
3. 4-terminal DC power block.



The IE Managed Miniature Media Converter powering options include AC and DC power as well as Power over Ethernet, functioning as a PD compliant with 802.3af. To use the DC terminal block, connect to any one positive and any one negative terminal from a power source.



**CAUTION:** This equipment is designed to permit the connection of the grounded conductor of the DC supply circuit to the grounding conductor at the equipment.

### 3. Connecting Fiber and Twisted Pair Cables

The IE Managed Miniature Media Converter is a CPE device (Remote) and can be connected to a Host device.

A Host device can be an IE Managed Miniature Media Converter or a switch. For other types of installation, please see the user manual.

1. Connect the fiber cable to the fiber port.  
**FX LNK/ACT:** Glows green when a link is established on the fiber port; blinks green when activity is detected on the fiber port.
2. Plug in the RJ-45 cable to the Twisted Pair port.  
**TX LNK/ACT:** Glows amber when a link is established on the copper port; blinks amber when activity is detected on the copper port.

### 4. Configuration via Console Session

## IE Managed Miniature Media Converter

1. Set the computer / terminal for VT-100 emulation with the following settings: 38.4K baud, 8 data bits, 1 stop bit, no parity, no flow control.
2. Connect the RS232 cable to the Console port, backside of the unit
3. Start the Serial session and press the Enter Key.
4. Set IP Address, Subnet Mask, Default Gateway and SNMP Community String if direct SNMP / Telnet management is required.
5. Set Mode and Ethernet Port Config.
6. Set Password if serial port security is required (optional).
7. Type Reboot for changes to take effect.

```
Saved Values. (These values will be active after reboot)
IP Address      - 192.168.10.202
Subnet Mask     - 255.255.255.0           DHCP is Not Active
Default Gateway - 192.168.10.253
Server IP Addr  - 192.168.10.207
New Prom File   - 722-00a0.bin

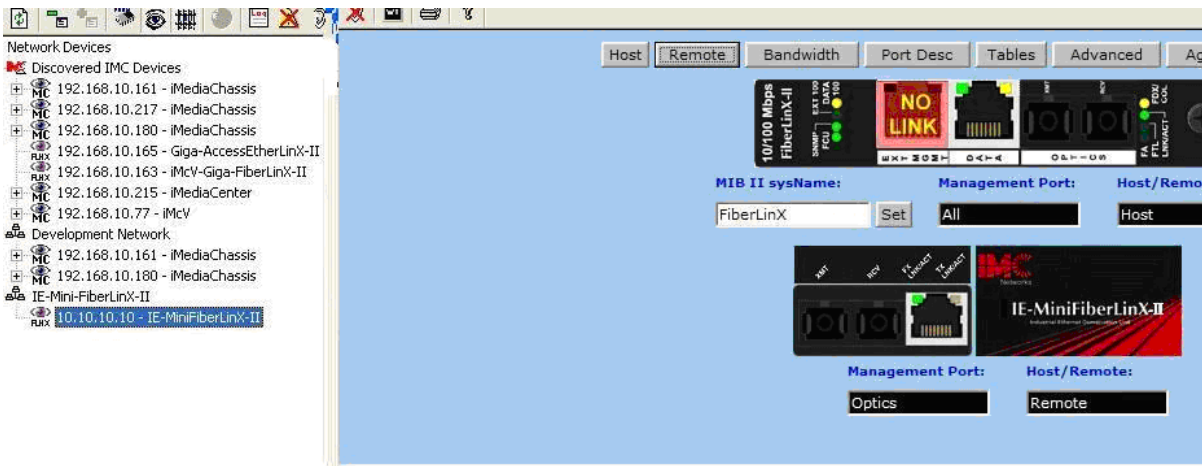
Current Values. (These values are in use now)
IP Address      - 192.168.10.202
Subnet Mask     - 255.255.255.0
Default Gateway - 192.168.10.253
Server IP Addr  - 192.168.10.207
New Prom File   - 722-00a0.bin

Community String: public      Access: r/w
V1 Trap Destination: 255.255.255.255  Community String: backplane
V2 Trap Destination: 255.255.255.255  Community String: backplane

Press I to enter new saved parameter values. Press P to change Password.
Press T to enter new Trap Destination. Press K to remove All Trap Destinations.
Press C to enter new Community String. Press U to remove All Community Strings.
Press E to End session. Type REBOOT to reboot unit. Press D for DHCP On/Off.
Press SpaceBar for additional commands.
```

### 5. Configuration via iView<sup>2</sup> (iConfig)

1. The computer must be attached to the local LAN connection via the fiber port and on the same Subnet Mask.
2. Start iView<sup>2</sup> and scan for devices.
3. A new device will show IP Address 10.10.10.10 with its name IE Managed Miniature Media Converter.
4. Open a session by typing in the USER NAME and USER PASSWORD. (**admin** / **admin** are the defaults)
5. Set the IP Address, Subnet Mask and Default Gateway as required.



**Black Box Tech Support: FREE! Live. 24/7.**

Tech support the  
way it should be.



Great tech support is just 30 seconds away at  
724-746-5500 or [blackbox.com](http://blackbox.com).



### About Black Box

Black Box provides an extensive range of networking and infrastructure products. You'll find everything from cabinets and racks and power and surge protection products to media converters and Ethernet switches all supported by free, live 24/7 Tech support available in 30 seconds or less.

© Copyright 2011. Black Box Corporation. All rights reserved. Black Box® and the Double Diamond logo are registered trademarks of BB Technologies, Inc. Any third-party trademarks appearing in this white paper are acknowledged to be the property of their respective owners.