

GigaTrue® 550 CAT6 550-MHz Solid Bulk Cable (UTP)

Applications

- Gigabit Ethernet
- WideBand™ Ethernet
- High-bandwidth network applications for:
 - Backbone
 - Horizontal cabling
 - Active zone cabling
- 100-Mbps TP-PMD
- 155-Mbps and 622-Mbps ATM
- High-performance digital video applications

Compliance

- ANSI/TIA/EIA-568-B.2-1
- ISO/IEC 11801 Class E
- ICEA S-90-661 (Category 5X-160)
- UL® MPG/CMR, CMG, or MPP/CMP

Specifications

Cable Type: 4-Pair UTP

Characteristic Impedance: 1–550 MHz: 100 ± 15 ohms

Conductor: 23 AWG, solid, bare copper

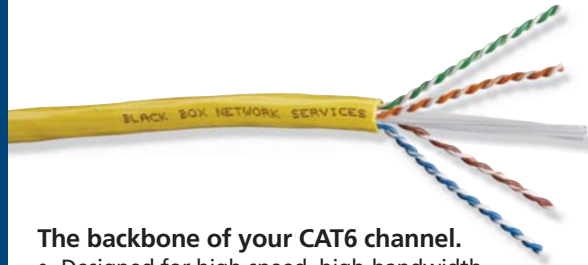
Delay Skew (Maximum): 25 ns/100 m

Input Impedance: 1–250 MHz: 100 ± 15 ohms

Return Loss (Minimum): 20.1 dB @ 100 MHz;
14.9 dB @ 550 MHz

Velocity of Propagation (Minimum): 62.2%
@ 550 MHz

GigaTrue® CAT6



The backbone of your CAT6 channel.

- Designed for high-speed, high-bandwidth data, voice, and video applications.
- Offers a great deal of headroom, giving you room for expansion.
- Guaranteed to exceed CAT6 requirements.
- Easy-to-use pull box features Accu-Pull measuring system.
- Cable is marked in descending two-foot increments so you always know how much cable is in the box.

Construction facts.

- PVC cable has polyolefin insulation and a flame-retardant jacket.
- The plenum cable features a Flexguard flame-retardant PVC jacket and FEP insulation.
- A central cross-web strength member increases performance.

Guaranteed for life.

- You're covered. We guarantee—for life—this cable and all the products in our GigaTrue line.



Proven performance.

- InterTek Testing Services/ETL Semko, Inc. conducted active testing on the GigaTrue CAT6 channel solution, and it passed with zero errors.

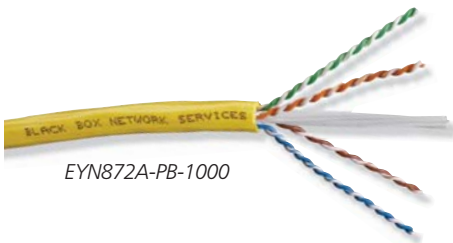


GigaTrue 550 CAT6 Solid Bulk Cable Electrical Specifications

Frequency MHz (maximum)	Attenuation dB/100 m (328 ft.) (maximum)	ACR dB/100 m (328 ft.) (maximum)	PS-ACR dB/100 m (328 ft.) (minimum)	NEXT dB/100 m (328 ft.) (minimum)	PS-NEXT dB/100 m (328 ft.) (minimum)	ELFEXT dB/100 m (328 ft.) (minimum)	PS-ELFEXT dB/100 m (328 ft.) (minimum)	Return Loss dB (minimum)
1	2	77.3	75.3	79.3	77.3	69.8	66.8	20
4	3.8	66.5	64.5	70.3	68.3	57.7	54.7	23
8	5.3	60.5	58.5	65.8	63.8	51.7	48.7	24.5
10	5.9	58.4	56.4	64.3	62.3	49.8	46.8	25
16	7.5	53.8	51.8	61.3	59.3	45.7	42.7	25
20	8.4	51.4	49.4	59.8	57.8	43.8	40.8	25
31.25	10.5	46.4	44.4	56.9	54.9	39.9	36.9	25
62.5	15.1	37.2	35.2	52.4	50.4	33.9	30.8	21.5
100	19.4	29.9	27.9	49.3	47.3	29.8	26.8	20.1
155	24.6	21.9	19.9	46.5	44.5	26	23	18.8
200	28.3	16.5	14.5	44.8	42.8	23.8	20.8	18
250	32	11.4	9.4	43.3	41.3	21.8	18.8	17.3
300	35.4	6.8	4.8	42.2	40.2	20.3	17.3	16.8
400	41.6	—	—	40.3	38.3	17.8	14.8	15.9
500	47.3	—	—	38.8	36.8	15.8	12.8	15.2
550	49.9	—	—	38.2	36.2	15	12	14.9

For the complete channel, see the next page.

ETL-Verified GigaTrue CAT6 Channel Solution



EYN872A-PB-1000



EVNSL641



FMT630-R2



JPM612A-R5

GigaTrue CAT6 550-MHz Solid Bulk Cable (UTP)

ORDERING INFORMATION		
4-Pair, 1000-feet (304.8-m), Pull Box		
Color	Catalog No., PVC Riser	Catalog No., Plenum
Blue	EYN870A-PB-1000	EYN871A-PB-1000
Yellow	EYN872A-PB-1000	EYN873A-PB-1000
White	EYN874A-PB-1000	EYN875A-PB-1000
Gray	EYN876A-PB-1000	EYN877A-PB-1000
Green	EYN878A-PB-1000	EYN879A-PB-1000
Red	EYN868A-PB-1000	EYN869A-PB-1000

- End-to-end CAT6 channel performance.

GigaTrue CAT6 550-MHz Patch Cables (UTP)

ORDERING INFORMATION	
Snagless Boots, Stranded, 24 AWG, 4-Pair, PVC, Straight-Pinned	
Color	Catalog No.
1-ft. (0.3-m)	EVNSL6XX-0001
2-ft. (0.6-m)	EVNSL6XX-0002
3-ft. (0.9-m)	EVNSL6XX-0003
4-ft. (1.2-m)	EVNSL6XX-0004
5-ft. (1.5-m)	EVNSL6XX-0005
6-ft. (1.8-m)	EVNSL6XX-0006
7-ft. (2.1-m)	EVNSL6XX-0007
10-ft. (3.0-m)	EVNSL6XX-0010
15-ft. (4.5-m)	EVNSL6XX-0015
20-ft. (6.0-m)	EVNSL6XX-0020
25-ft. (7.6-m)	EVNSL6XX-0025
30-ft. (9.1-m)	EVNSL6XX-0030
50-ft. (15.2-m)	EVNSL6XX-0050
100-ft. (30.4-m)	EVNSL6XX-0100

To order, replace the "XX" with the color number.

- | | | |
|------------|-------------|-------------|
| Gray = 40 | Yellow = 44 | Purple = 48 |
| Blue = 41 | Beige = 45 | Orange = 49 |
| Green = 42 | Pink = 46 | White = 50 |
| Red = 43 | Black = 47 | |

TECH SPECS

- ACR (Min.) — 29.9 dB @ 100 MHz
- Attenuation (Max.) — 19.4 dB/100 m @ 100 MHz; 49.9 dB/100 m @ 550 MHz
- Conductor — 23 AWG, solid, bare copper
- Delay Skew (Maximum) — 25 ns/100 m (328 ft.)
- Characteristic Impedance — 100 ± 15 ohms @ 550 MHz
- ELFEXT (Min.) — 29.8 dB @ 100 MHz; 15 dB @ 550 MHz
- NEXT (Min.) — 49.3 dB @ 100 MHz; 38.2 dB @ 550 MHz
- PS-ACR (Min.) — 27.9 dB @ 100 MHz
- PS-ELFEXT (Min.) — 26.8 dB @ 100 MHz; 12 dB @ 550 MHz
- PS-NEXT — 47.3 dB @ 100 MHz; 36.2 dB @ 550 MHz
- Return Loss (Min.) — 20.1 dB @ 100 MHz; 15.2 dB @ 500 MHz

- Universal wiring.

GigaTrue2 CAT6 Jacks

ORDERING INFORMATION	
Color	Catalog No.
Blue	FMT630-R2
Black	FMT631-R2
Ivory	FMT632-R2
Gray	FMT633-R2
Green	FMT634-R2
Office White	FMT635-R2
Orange	FMT636-R2
Red	FMT637-R2
White	FMT639-R2
Yellow	FMT640-R2

For 25, add -25-PAK to the end of the code.

- ETL-tested and verified CAT6 performance.

GigaTrue CAT6 Patch Panels

ORDERING INFORMATION	
Universal Wiring	Catalog No.
24-Port, 1.75" H, 1U	JPM610A-R5
48-Port, 3.5" H, 2U	JPM612A-R5
96-Port, 7.0" H, 4U	JPM614A-R5

All include cable ties and mounting hardware.

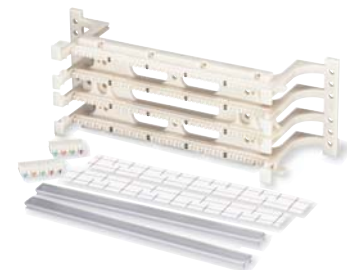
GigaStation 2 Wallplates

GigaStation2 Wallplates are available in multiple configurations. For details, see blackbox.com. Type WPT454 in the Search Catalog field.



CAT6 Wiring Block Kit

A CAT6 Wiring Block Kit is also available. For details and kit contents, see blackbox.com. Type JP061 in the Search Catalog field.



For ETL test results, call 724-746-5500 or go to blackbox.com/Promos/channelsolutions.aspx