

USB 2.0 4-Port Hub

# **User's Manual**

## **Safety Instructions**

Always read the safety instructions carefully:

- Keep this User's Manual for future reference.
- Keep this equipment away from humidity.
- If any of the following situation arises, get the equipment checked by a service technician:
  - The equipment has been exposed to moisture.
  - The equipment has been dropped and damaged.
  - The equipment has obvious sign of breakage.
  - The equipment has not been working well or you cannot get it work according to User's Manual.

## **Copyright Statement**

No part of this publication may be reproduced in any form by any means without the prior written permission. Other trademarks or brand names mentioned herein are trademarks or registered trademarks of their respective companies.

## **Disclaimer**

Information in this document is subject to change without notice. The manufacturer does not make any representations or warranties (implied or otherwise) regarding the accuracy and completeness of this document and shall in no event be liable for any loss of profit or any commercial damage, including but not limited to special, incidental, consequential, or other damage.

# Table of Contents

<b>Introduction .....</b>	<b>1</b>
<b>Features .....</b>	<b>1</b>
<b>Package Contents .....</b>	<b>1</b>
<b>System Requirement .....</b>	<b>1</b>
<b>LED Status .....</b>	<b>2</b>
<b>Notice .....</b>	<b>2</b>
<b>Hardware Connection .....</b>	<b>2</b>
<b>Installation Verification .....</b>	<b>3</b>
<b>Over-Current Status Figure .....</b>	<b>5</b>
<b>Specifications .....</b>	<b>5</b>
<b>Regulatory Compliance .....</b>	<b>6</b>

## Introduction

This is a 4-port hub compliant with USB 2.0 specification. It is able to support 12 M transmission distance, and comply with USB-IF Battery charging specification 1.1. This Hub has USB charging detection mechanism, each port supports Battery charger function, but only one can be the Battery charger port at the same time. On the other hand, users can only choose one of four ports as the port with battery charging function at the same time. It is the USB Hub for you easily connecting up to 4 USB 2.0 devices to your computer, such as an MP3 player, digital camera, or printers. Its streamlined, sleek and compact design is the perfect solution for USB port expansion.

## Features

- Fully compliant with USB2.0 specification (1.5/12/480 Mbps)
- Comply with USB-If Battery charging specifications 1.1
- Either one of four USB ports can provide fast recharge (1.5A) function.
- USB charging detection mechanism
- Bus-power and self-power mode used
- 1 upstream and 4 downstream USB ports included
- 1 blue LED as power-on indicator
- 12M transmission distance for Host to Hub
- Plug-and-play function
- A charging port is either a dedicated charging port or a charging downstream port
- A USB charger is device with a dedicated charging port ,such as a wall adapter or car power adapter

## Package Contents

- USB 2.0 4-port Hub
- USB AM to 5P mini BM cable (1M)
- Power Adapter
- User's Manual

## System Requirement

- Desktop PC or notebook with USB port
- One of the following operating systems (no driver needed):  
Windows® 2000, Windows® XP, Windows Vista® SP1 or SP2, Windows® 7,  
Mac OS® X v10.x or later

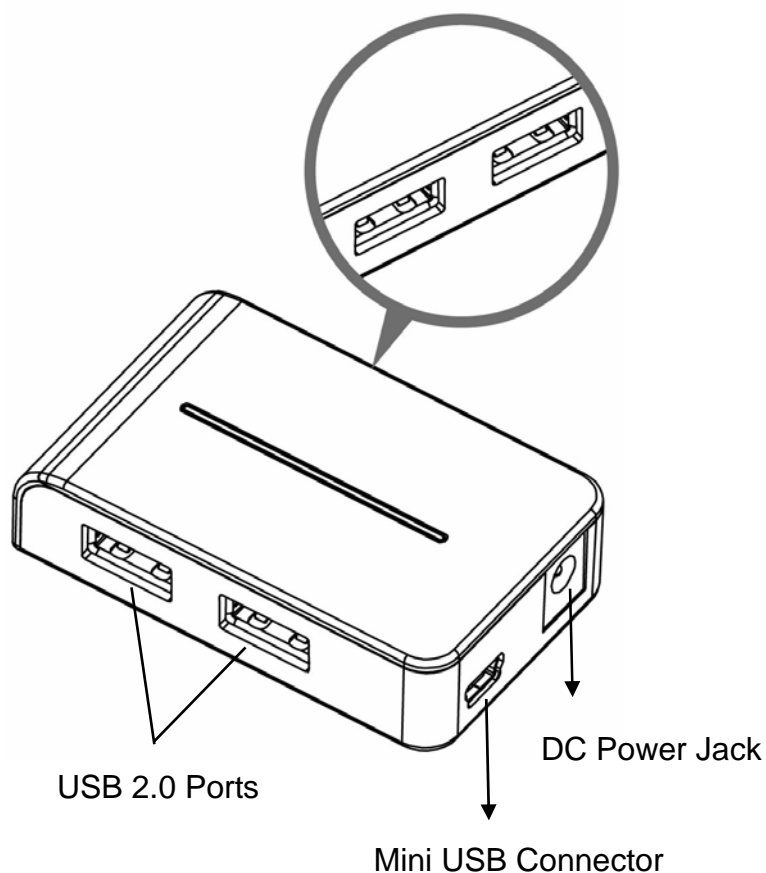
## LED Status

LED	Color	Description
Link	Blue	On for power on. Off for power off.

## Notice

- The **Power Adapter** is recommended to use for high power consumption devices.

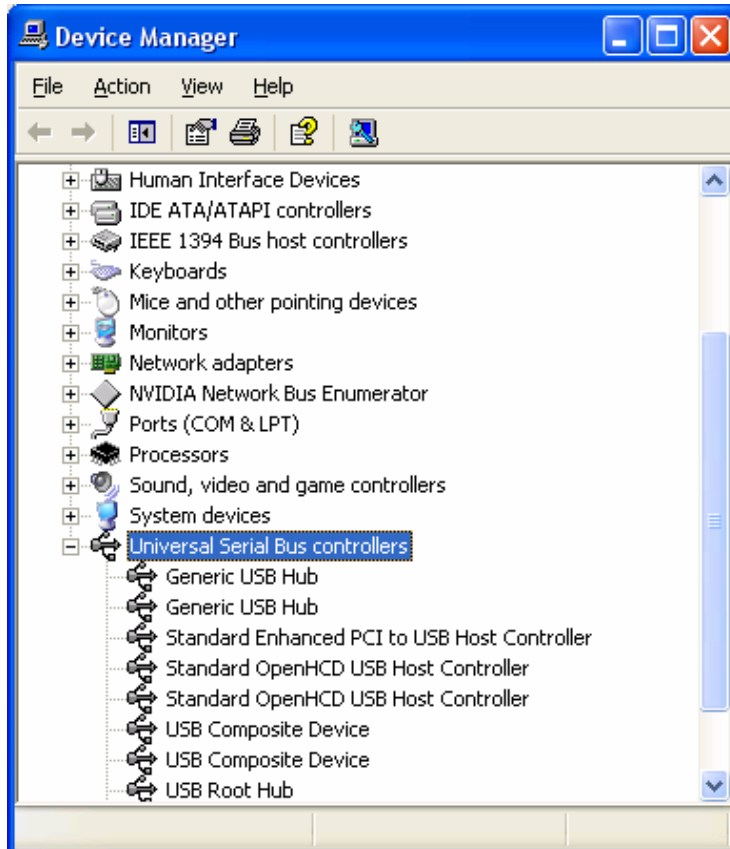
## Hardware Connection



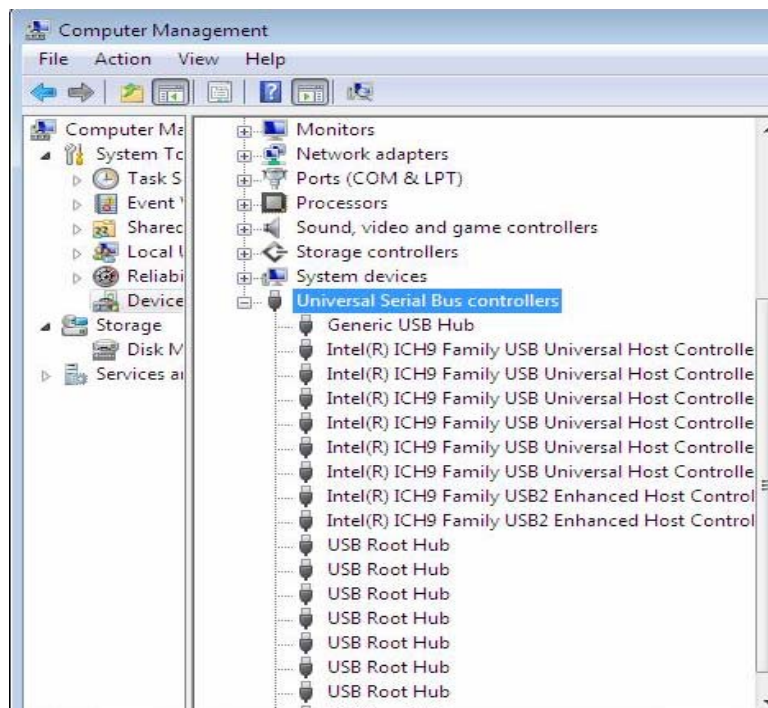
## Installation Verification

After you connect this hub to PC by a USB cable, the system will detect the device and install the required drivers automatically. After the installation finished, you can go to **Device Manager** to verify the entire installation.

**Windows® 2000/ Windows® XP:**

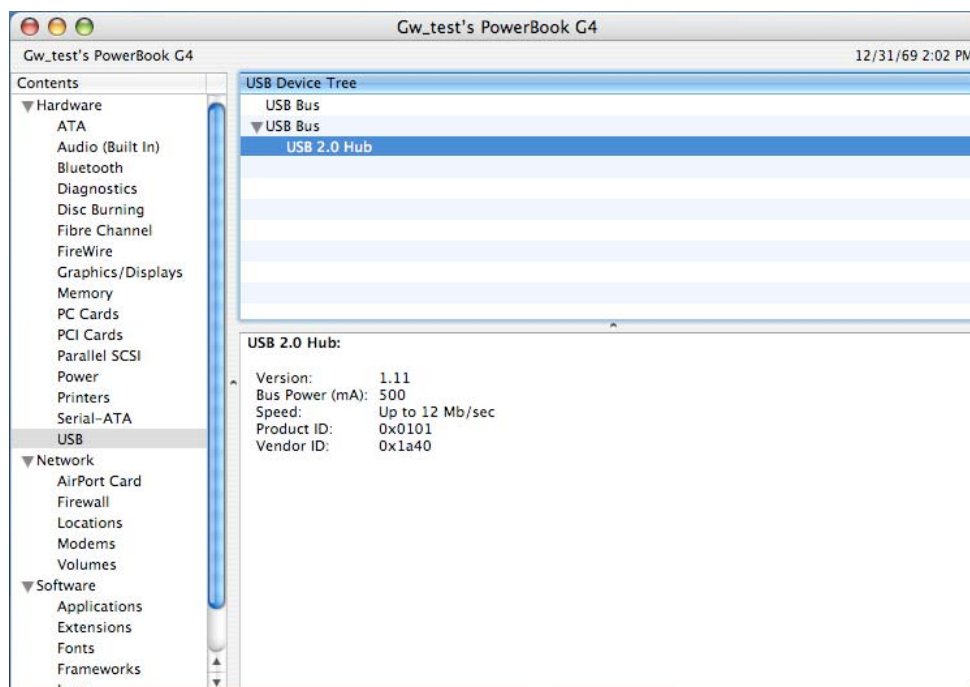


## Windows Vista® /Windows® 7:



Under Windows: Go to **Device Manager** to verify the installation. Under the **Universal Serial Bus controller** group, an item **Generic USB Hub** should appear.

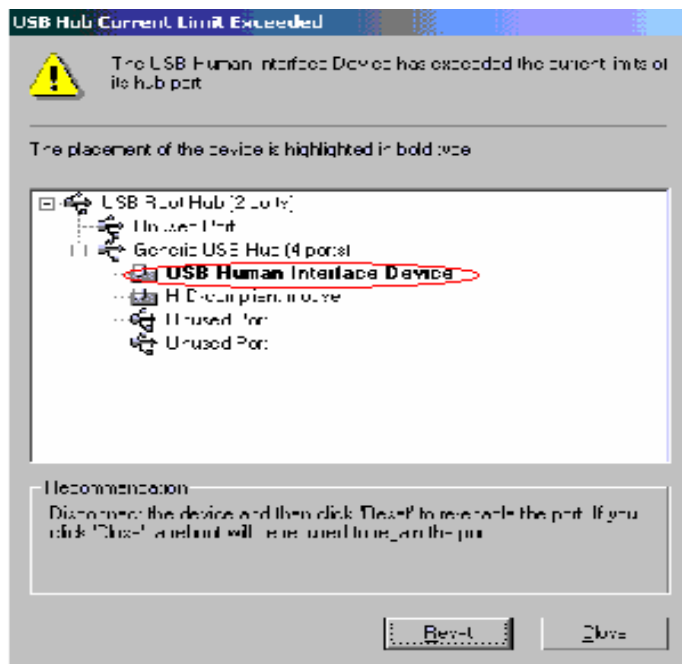
## Mac OS®:



Mac OS®: Go to **Apple System Profile > Device and Volumes > USB** to verify the installation.

## Over-Current Status Figure

- If there is a pop-up window, “USB Hub Current Limit Exceeded”, please click Reset to resume work or you can reset the hub by unplugging the USB cable and plugging it back.
- When the excessive current happens, the red LED will be turned off and the power will be disconnected due to the over-current protection.



## Specifications

Function	Specification	
Ports	1 upstream port and 4 downstream ports	
Compliance	FCC regulations for home or office use CE emissions	
Power	Bus-Power: 5V 500mA	
	Self-Power: 5V 4A	
	Adapter	Input: 100~240v 50Hz-60Hz Output: 5V 4A
Dimensions	65.34 (L) * 40.08(W) * 18.03 (L) mm	
Storage Temperature	-10~85 degrees (Celsius)	
Working Temperature	0~40 degrees (Celsius)	



# Regulatory Compliance

## FCC Conditions

This equipment has been tested and found to comply with Part 15 Class B of the FCC Rules. Operation is subject to the following two conditions:

- (1) This device may not cause harmful interference
- (2) This device must accept any interference received and include interference that may cause undesired operation.

## CE

This equipment is in compliance with the requirements of the following regulations:  
EN 55 022: EMC Directive 2004/08/EC (EN55022/EN55024)

## WEEE Information

For EU (European Union) member users:

According to the WEEE (Waste electrical and electronic equipment) Directive, do not dispose of this product as household waste or commercial waste. Waste electrical and electronic equipment should be appropriately collected and recycled as required by practices established for your country. For information on recycling of this product, please contact your local authorities, your household waste disposal service or the shop where you purchased the product.

