



LEH2004A-4GSFP

Industrial Managed Gigabit Ethernet Switch

Quick Start Guide

Has (4) 10/100/1000-Mbps RJ-45 twisted-pair and
(4) combo RJ-45/SFP Gigabit ports.



Customer Support Information

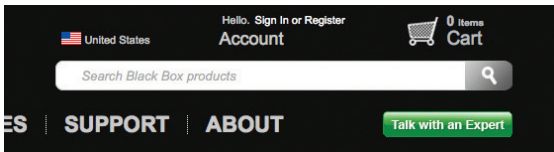
Order toll-free in the U.S.: Call 877-877-BBOX (outside U.S. call 724-746-5500) • FREE technical support 24 hours a day, 7 days a week: Call 724-746-5500 or fax 724-746-0746
www.blackbox.com • info@blackbox.com

Industrial Managed GE Switch Quick Start Guide

1. Specifications

For complete specifications, please see the user manual or the product data sheet for this switch.

1. Go to www.blackbox.com
2. Enter the part number (LEH2004A-4GSFP) in the search box:



3. Click on the “Resources” tab on the product page, and select the document you wish to download.

2. Features

- Has (4) 10-/100-/1000-Mbps copper access ports and (4) Gigabit combination RJ-45/SFP ports.
- Operates in extreme temperatures of -40 to +158° F (-40 to +70° C).

3. What's Included

Your package should contain the following items. If anything is missing or damaged, contact Black Box Technical Support at 724-746-5500 or info@blackbox.com.

- Industrial Managed Gigabit Ethernet Switch - 4-Port RJ-45, 4-Port Combo RJ-45/SFP
- (4) dust covers (installed on SFP slots to protect the electronic circuitry)
- (9) dust covers (installed on RJ-45 ports to protect the electronic circuitry)
- Console cable
- DIN-rail mounting kit

Industrial Managed GE Switch Quick Start Guide

- Wallmounting kit
- Console cable
- (6) M3 x 5 flat-head screws
- This printed quick start guide

3. Front Panel Description

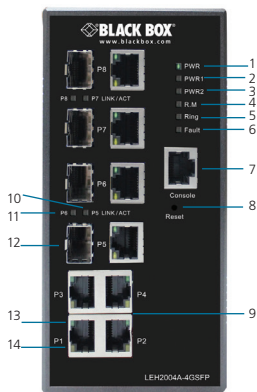


Figure 1. Front panel of the switch.

- | | |
|---------------------------|--|
| 1. PWR status LED | 8. Reset button |
| 2. PWR1 LED | 9. Gigabit LAN ports |
| 3. PWR2 LED | 10. Link/Act LED for SFP ports |
| 4. Ring Master status LED | 11. Link/Act LED for Gigabit LAN ports |
| 5. Ring status LED | 12. SFP ports |
| 6. Fault relay LED | 13. Indicators for LAN ports |
| 7. Console port | 14. Speed LED for LAN ports |

Industrial Managed GE Switch Quick Start Guide

4. Power Connection Guide

Connect the power as shown in the diagram below.

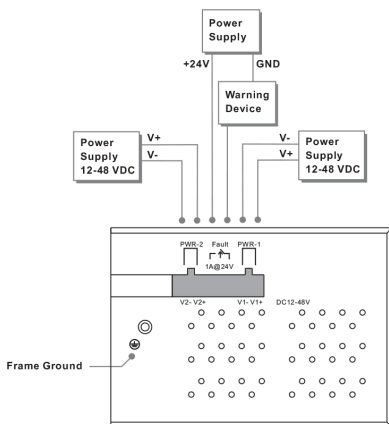


Figure 2. Power connection guide.

5. Installation

To attach the wallmounting brackets on the switch, refer to the diagram below.

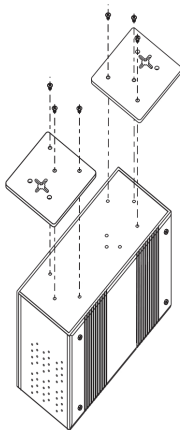


Figure 3. Wallmounting brackets installation.

Industrial Managed GE Switch Quick Start Guide

To install the switch on a DIN rail, see the diagrams shown below.

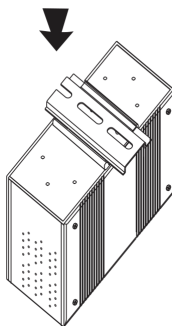
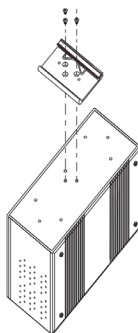


Figure 4. DIN rail installation.

Industrial Managed GE Switch Quick Start Guide

6. Windows Utility Screens

The switch includes a set of Windows utility screens that help you manage and monitor all Hardened Managed Gigabit Ethernet Switches on the network.

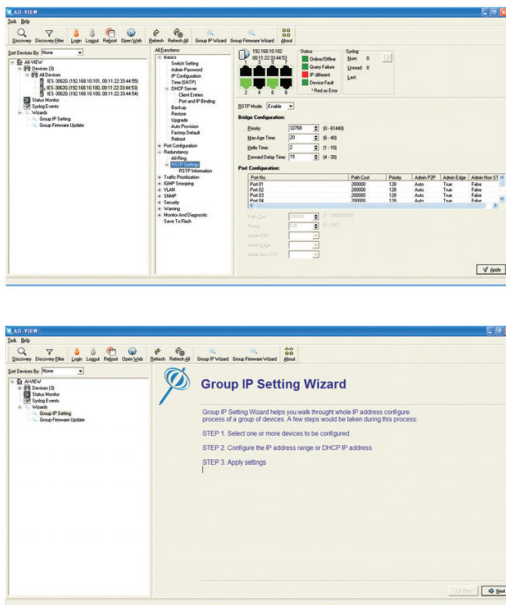


Figure 5. Monitoring and configuration interface.

Black Box Tech Support: FREE! Live. 24/7.

Tech support the
way it should be.



Great tech support is just 60 seconds away
at 724-746-5500 or blackbox.com.



About Black Box

Black Box provides an extensive range of networking and infrastructure products. You'll find everything from cabinets and racks and power and surge protection products to media converters and Ethernet switches all supported by free, live 24/7 Tech support available in 60 seconds or less.

© Copyright 2015. Black Box Corporation. All rights reserved. Black Box® and the Double Diamond logo are registered trademarks of BB Technologies, Inc. Any third-party trademarks appearing in this manual are acknowledged to be the property of their respective owners.

LEH2004A-4GSFP, version 1

724-746-5500 | blackbox.com