

QUICK START GUIDE

VSW-MC-CTRL

MEDIACENTO CONTROLLER

24/7 TECHNICAL SUPPORT AT 877.877.2269 OR VISIT BLACKBOX.COM



STEP 1 - Package Contents

VSW-MC-CTRL PACKAGE CONTENTS

- (1) **MEDIACENTO IPX CONTROLLER**
- (1) **POWER SUPPLY WITH POWER CORD**
- **THIS QUICK START GUIDE**

ADDITIONAL ITEMS YOU WILL NEED

- **MEDIACENTO IPX TRANSMITTERS AND RECEIVERS**

OPTIONAL: DOWNLOAD USER MANUAL

For product specifications and regulatory information, refer to the User Manual. You can download this document from our web site.

1. Go to www.blackbox.com
2. Enter the part number (VSW-MC-CTRL) in the search box.
3. Click on the product in the "Product Results" page.
4. Click on the "Support" tab on the product page, and select the document you wish to download.

If you have any trouble accessing the Black Box site to download the manual, you can contact our Technical Support at 877-877-2269 or info@blackbox.com



STEP 2A - Front Panel of the MediaCentro Controller



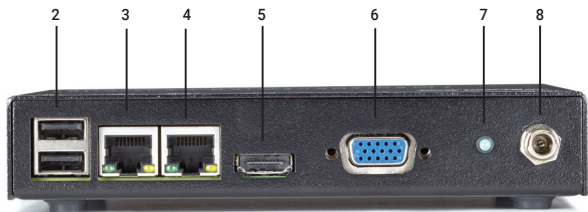
FRONT PANEL

TABLE 1. VSW-MC-CTRL FRONT PANEL COMPONENTS

NUMBER IN DIAGRAM ABOVE	DESCRIPTION	DESCRIPTION
1	(1) DB9 male connector	RS-232 console port



STEP 2B - Back Panel of the MediaCentro Controller



BACK PANEL

TABLE 2. VSW-MC-CTRL REAR PANEL COMPONENTS

NUMBER IN DIAGRAM ABOVE	DESCRIPTION	DESCRIPTION
2	(2) USB Type A connectors	Links to USB devices
3	(1) RJ-45 connector	Links to AV network
4	(1) RJ-45 connector	Links to control network
5	(1) HDMI connector	HDMI
6	(1) HD15 connector	VGA
7	(1) Power LED	Lights when power is ON
8	(1) Power connector	Connect to 12-VDC power supply



STEP 3 - Log In to the MediaCento IPX Controller

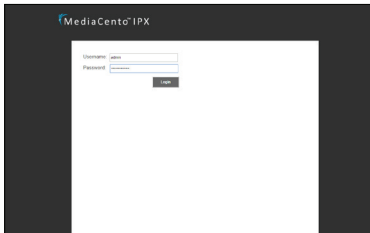
DEFAULT USER NAME AND PASSWORD

- **USER NAME: ADMIN**
- **PASSWORD: BBNSMEDIACENTO**

LOGIN STEPS

Connect through your preferred Web browser to access the Controller's Web interface in the following ways:

1. If the same Ethernet interface is used for both the MediaCento IPX endpoints and your control PC, you should be connected to Eth1 and you will have access to the default IP address: 169.254.1.1
2. If you are using the optional Control port to control the system from a secondary network, your PC should be connected to Eth0 and you will have to access the default IP address: 192.168.10.10
3. When first connecting to the MediaCento IPX Controller, enter the default username (admin) and password (BBNSMediaCento).



LOGIN SCREEN

DEFAULT IP ADDRESS

- **DEFAULT IP ADDRESS FOR ETH1:
169.254.1.1**
- **DEFAULT IP ADDRESS FOR ETH0:
192.168.10.10**

DEFAULT API CREDENTIALS

- **USER NAME: APIUSER**
- **PASSWORD: APIPASS2015**



STEP 4 - User Interface Pages

VIEW STATUS AND CHANGE PRESETS

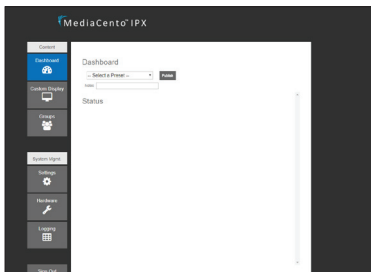
From the Dashboard, you can::

1. Check the status of the controller.
2. See which receiver is currently connected to which transmitter.
3. To change a preset, select the preset in the drop-down menu and confirm the switch.

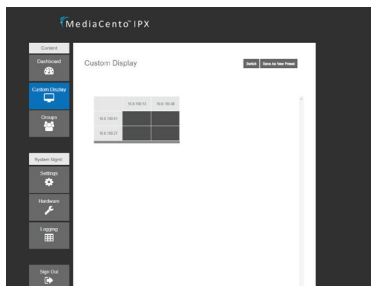
CUSTOM DISPLAY

The custom display page is where specific switching is done as well as setting up presets, if desired. The matrix in the middle is easy to use with receivers/groups/and video walls along the left of the matrix and transmitters (sources) along the top.

1. To switch, simply select the box that matches the desired receivers to the correct transmitters and confirm the switch.
2. To set up presets, switch the units to the desired layout, confirm the switch and save the preset. When saving a preset, a name and note can be linked to it for ease of use for all users.



DASHBOARD



CUSTOM DISPLAY



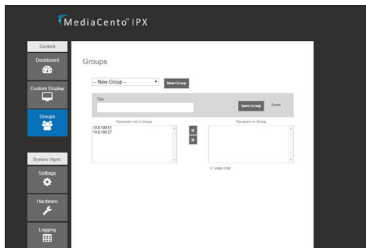
STEP 4 (CONTINUED) - User Interface Pages

GROUPS

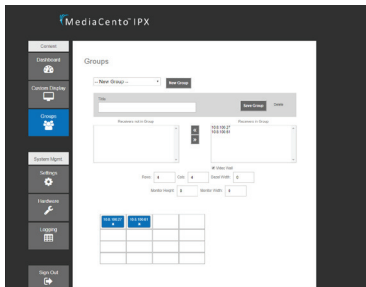
The groups page is where groups and video walls are created from a number of receivers.

1. To create a group, select the desired receivers and put them into the right column. The group can be named and saved now or turned into a video wall.

2. To create a video wall out of the group, check the video wall checkbox. This will open up an additional window below where you can enter the number of rows and columns, as well as bezel information. You can drag and drop receivers in the group from the list to the left of the video wall diagram. Bezel information is a ratio and units does not matter as long as the same units are used for all bezel information.



GROUPS SCREEN



VIDEO WALL SCREEN



STEP 4 (CONTINUED) - User Interface Pages

SETTINGS

The settings page is where the controller specific settings can be changed. This currently includes the IP addresses of both the control and video networks.

HARDWARE

The hardware page is where new MediaCentro IPX units are detected and configuration on them is done. Detecting new units can take up to 30 seconds, but it will find and display every MediaCentro IPX unit seen on the network. Receivers are listed on the left and transmitters on the right.

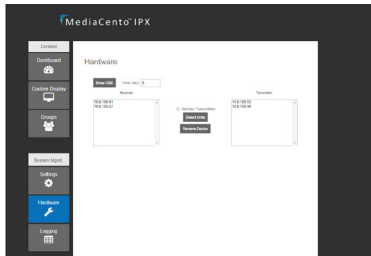
1. Each unit can be given a specific name which is connected to the IP address. This makes it easier to switch correct units.

2. To correctly identify each unit, OSD (On Screen Display) can be triggered. This will display the IP address as well as any name currently given to a receiver on the display it is connected to.

NOTE: For advanced commands, refer to the user manual.



SETTINGS PAGE



HARDWARE SCREEN



STEP 5 - Application Program Interface (API)

1. To enable API functionality, navigate to the "Settings" tab and check the box under "Enable/Disable API User." Enabling this setting will allow the default API user of your MediaCentO Controller the ability to receive API commands. API commands are sent via http.
2. To send a command, type the API command into a web browser using values specific to your MediaCentO Setup.

All variables in API commands are based on the predefined information from the MediaCentO Controller Web Interface. Groups and Presets have to be defined before calling an API command. If a transmitter or receiver are not named, then their IP address (Periods Included) will be used in the API calls.

DEFAULT API CREDENTIALS

- **USER NAME: APIUSER**
- **PASSWORD: APIPASS2015**

SWITCH ONE RX TO TX

```
http://bbox.local.net/bbapi/v1/apiuser/switchrx?u=apiuser&p=apipass2015&t=tx1&r=rx1
```

**Replace bbox.local.net with hostname or IP address of MediaCentO Controller box

Parameters:

u = API Username

p = API Password

t = Transmitter Name

r = Receiver Name

SWITCH GROUP TO TX

```
http://bbox.local.net/bbapi/v1/apiuser/switchgroup?u=apiuser&p=apipass2015&t=tx1&g=g1
```

**Replace bbox.local.net with hostname or IP address of MediaCentO Controller box

Parameters:

u = API Username

p = API Password

t = Transmitter Name

g = Group Name



STEP 5 (CONTINUED) - API

ACTIVATE A PRESET

`http://bbox.local.net/bbapi/v1/apiuser/switchpreset?u=apiuser&p=apipass2015&preset=p1`

**Replace `bbox.local.net` with hostname or IP address of MediaCento Controller box parameters:

`u` = API Username

`p` = API Password

`preset` = Preset Name

EXAMPLES

`http://10.8.10.1/bbapi/v1/apiuser/switchpreset?u=apiuser&p=apipass2015&preset=preset1`

`http://10.8.10.1/bbapi/v1/apiuser/switchrx?u=apiuser&p=apipass2015&t=169.254.3.68&r=169.254.2.3`



NOTES



**NEED HELP?
LEAVE THE TECH TO US**

**LIVE 24/7
TECHNICAL
SUPPORT**

1.877.877.2269